

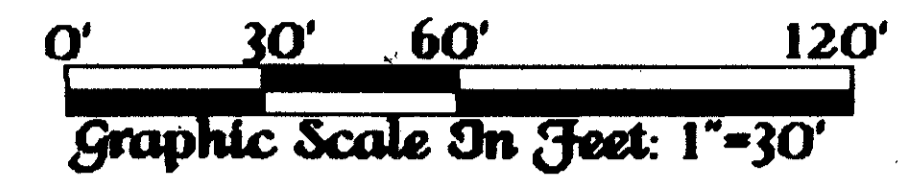
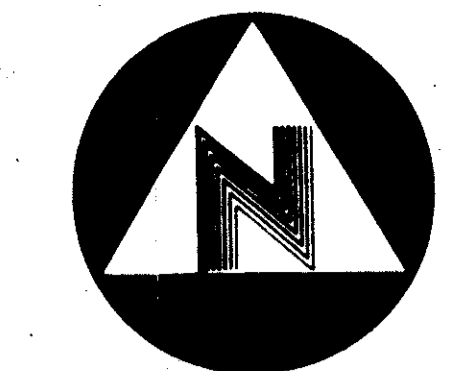
# -Casas De Marbella-

March, A.D., Nineteen Hundred Eighty Nine

0551-001

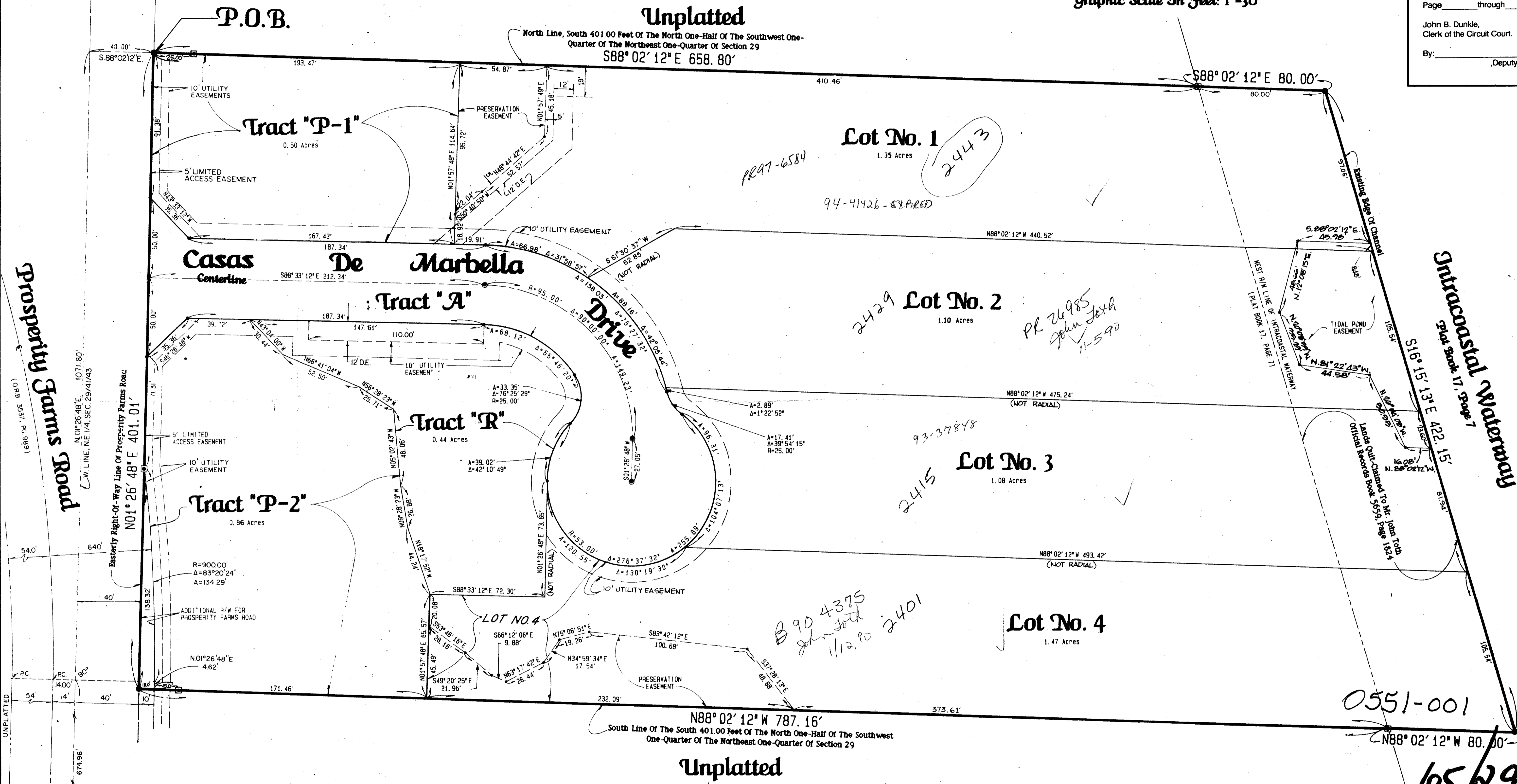
29

Sheet Two Of Two



State Of Florida )  
 County Of Palm Beach )  
 This Plat was filed for record at  
 this day of \_\_\_\_\_  
 A.D., 1990, and duly recorded  
 in Plat Book \_\_\_\_\_ on  
 Page \_\_\_\_\_ through \_\_\_\_\_  
 John B. Dunkle,  
 Clerk of the Circuit Court.  
 By: \_\_\_\_\_, Deputy Clerk

Unplatted



*PR 97-6584*  
*94-4126 - EX ARED*  
 Lot No. 1  
 1.35 Acres  
 2443

*2429* Lot No. 2  
 1.10 Acres  
*PR 26985 John Joth 11-5-90*

*93-37848*  
*2415* Lot No. 3  
 1.08 Acres

*B 90 4375 John Joth 11/2/90*  
*2401* Lot No. 4  
 1.47 Acres

0551-001

65/29

**Point Of Commencement**  
 CENTER OF SECTION 29-41-43  
 P.K. NAIL & BRASS WASHER

**Legend:**  
 [Symbol] Indicates A Permanent Reference Monument \* 2424 (P.R.M.)  
 [Symbol] Indicates A Permanent Control Point \* 2424 (P.C.P.)  
 [Symbol] Indicates A Drainage Easement  
 [Symbol] Indicates A Utility Easement

**NOTE:**  
 ALL LINES ARE NON-RADIAL  
 UNLESS OTHERWISE SHOWN

ADD. BY *BT*  
 CHECKED BY *[Signature]*

This instrument was prepared by Wm. R. Van Campen, R.L.S., & Gene D. Bowling, Jr. in and for the offices of Bench Mark Land Surveying & Mapping, Inc., 4152 W. Blue Heron Boulevard, Suite 121, Riviera Beach, FL.

**BENCH MARK**  
 LAND SURVEYING & MAPPING, INC.  
WEST PALM BEACH, FLORIDA - RIVIERA BEACH, FLORIDA

-Record Plat-  
**Casas De Marbella**

OWN	REV	DATE	WD. NO. 67555
SCALE	SIZE	FB P	SHEET 2 OF 2

DIVISION # CASAS DE MARBELLA  
 BOOK 65 PAGE 29  
 RECORDED IN PLAT BOOK # 1112  
 CITY 12  
 COUNTY PALM BEACH  
 STATE FLORIDA

7/2/49